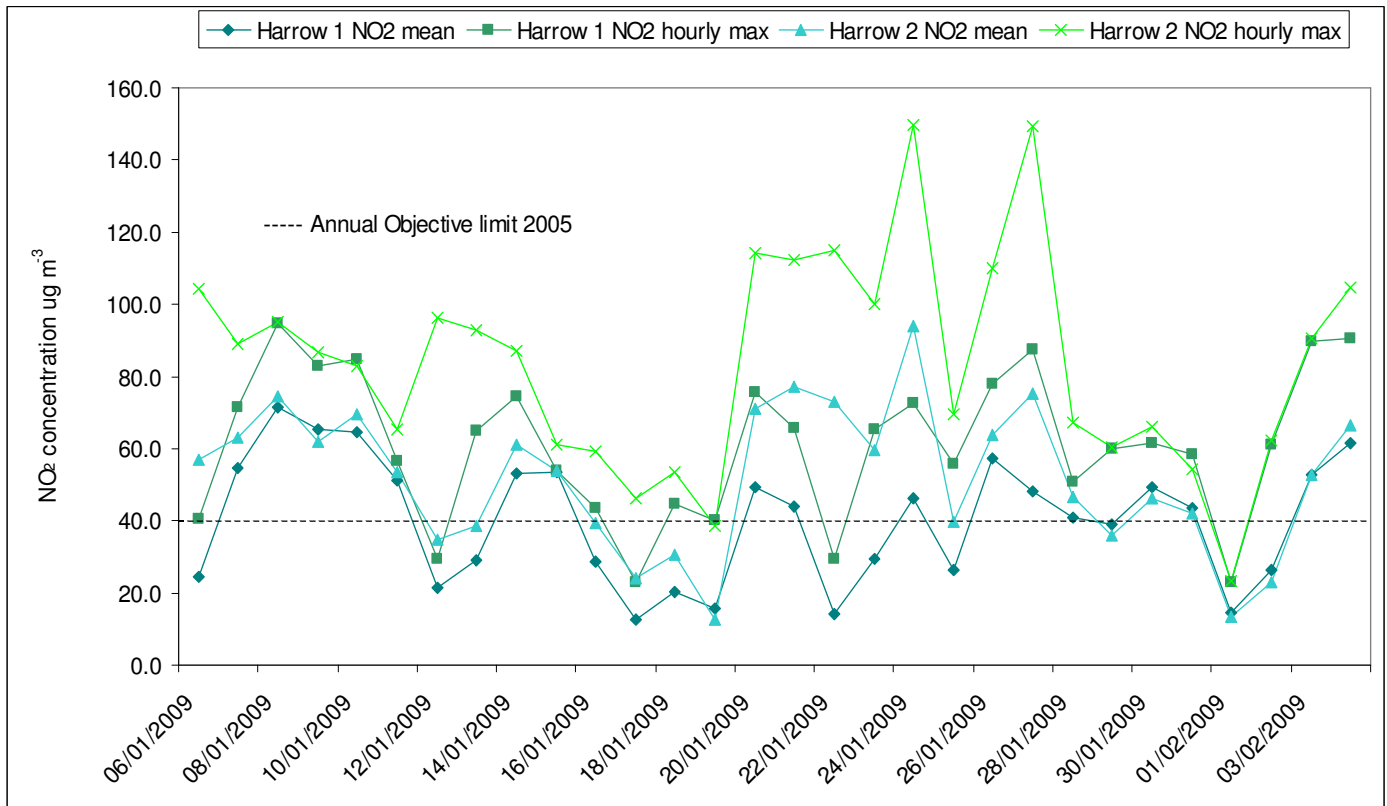
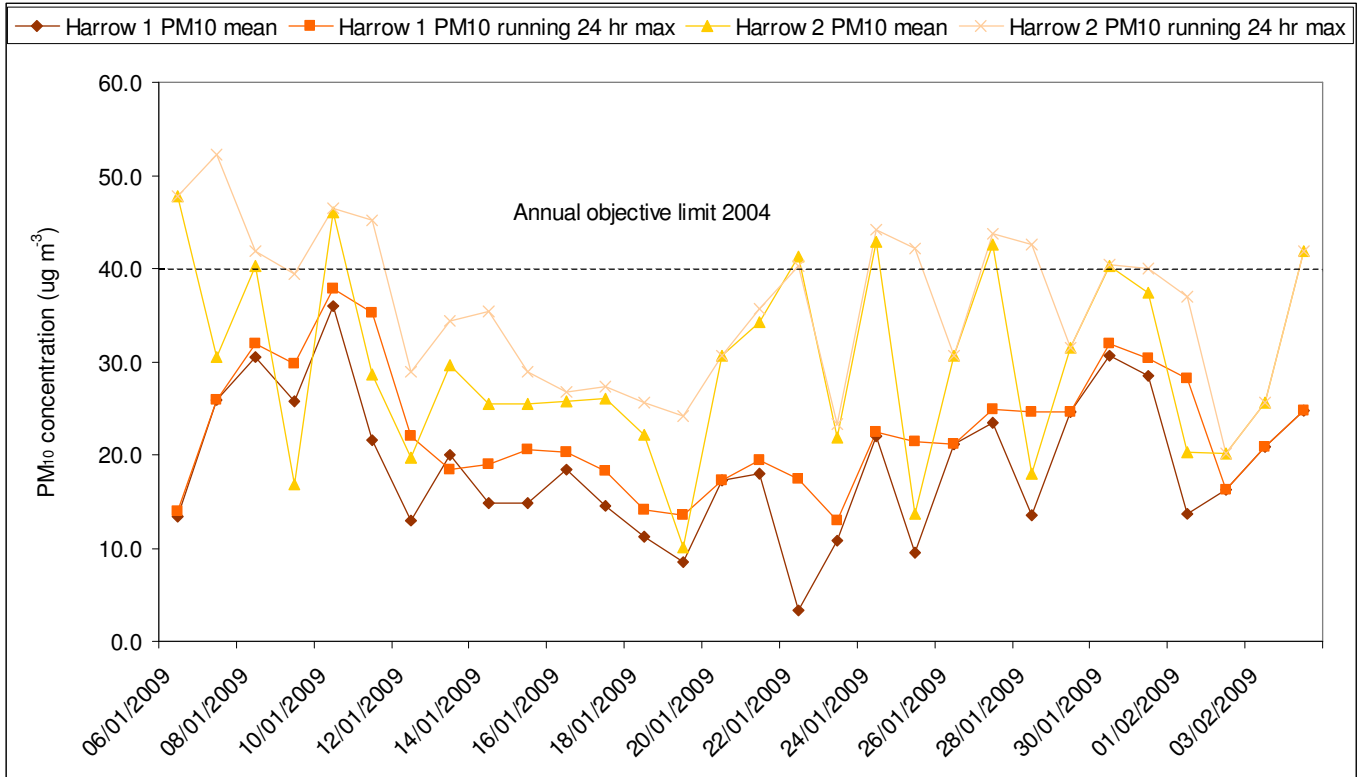


Nitrogen Dioxide (NO<sub>2</sub>) concentrations (µg m<sup>-3</sup>) from Harrow 1 (Background) and Harrow 2 (Roadside) continuous monitoring stations from 6-Jan-2009 to 4-Feb-2009.



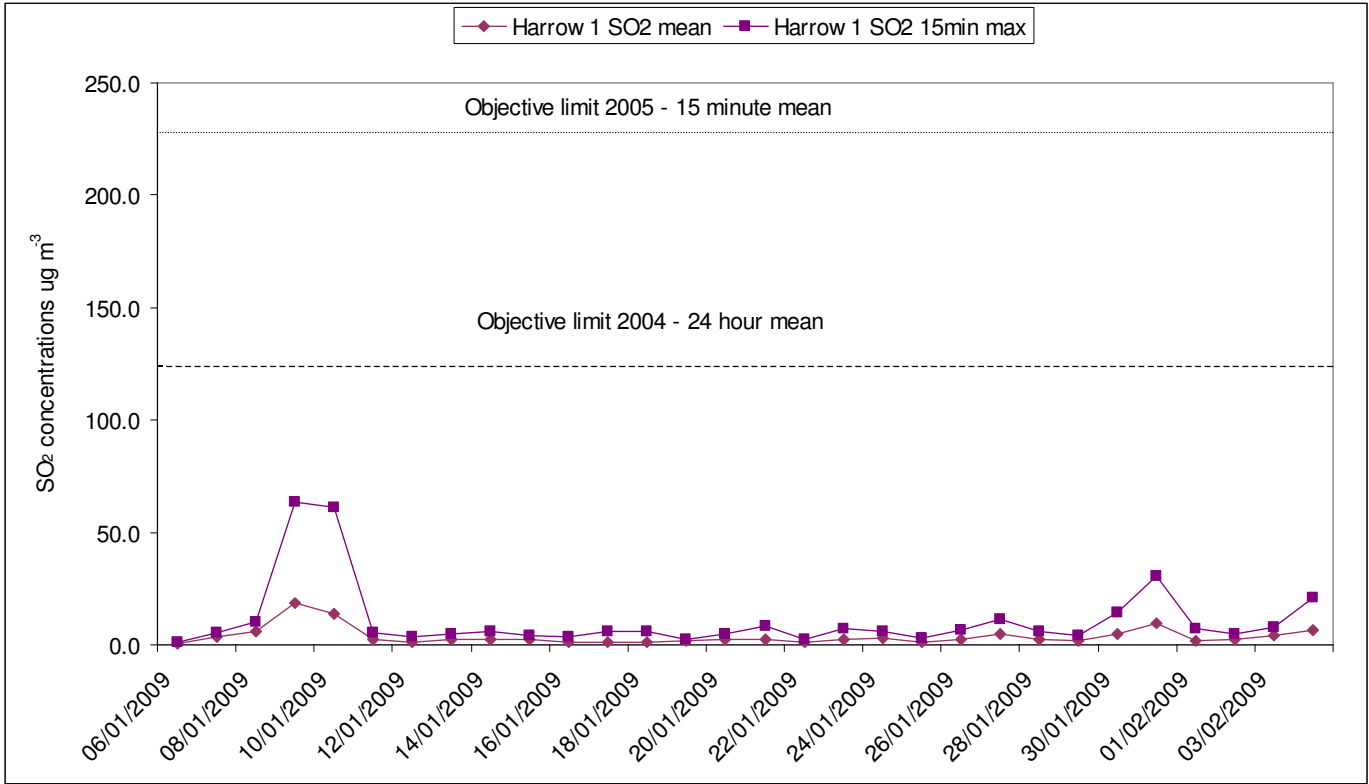
The NO<sub>2</sub> mean concentrations are daily mean figure and the NO<sub>2</sub> hourly max are the maximum figure in an hour for the 24 hour period.

Particulate (PM<sub>10</sub>) concentrations ( $\mu\text{g m}^{-3}$ ) from Harrow 1 (Background) and Harrow 2 (Roadside) continuous monitoring stations from 6-Jan-2009 to 4-Feb-2009.



The PM<sub>10</sub> mean concentrations are daily mean figures and the PM<sub>10</sub> hourly max are the maximum running figure for a 24 hour period. All data corrected from TEOM to gravimetric standard.

Sulphur Dioxide (SO<sub>2</sub>) concentrations (µg m<sup>-3</sup>) from Harrow 1 (Background) and Harrow 2 (Roadside) continuous monitoring stations from 6-Jan-2009 to 4-Feb-2009.



The SO<sub>2</sub> mean concentrations are daily mean figures and the SO<sub>2</sub> hourly max are the maximum running figure for each 15 minute period during each 24 hour period.