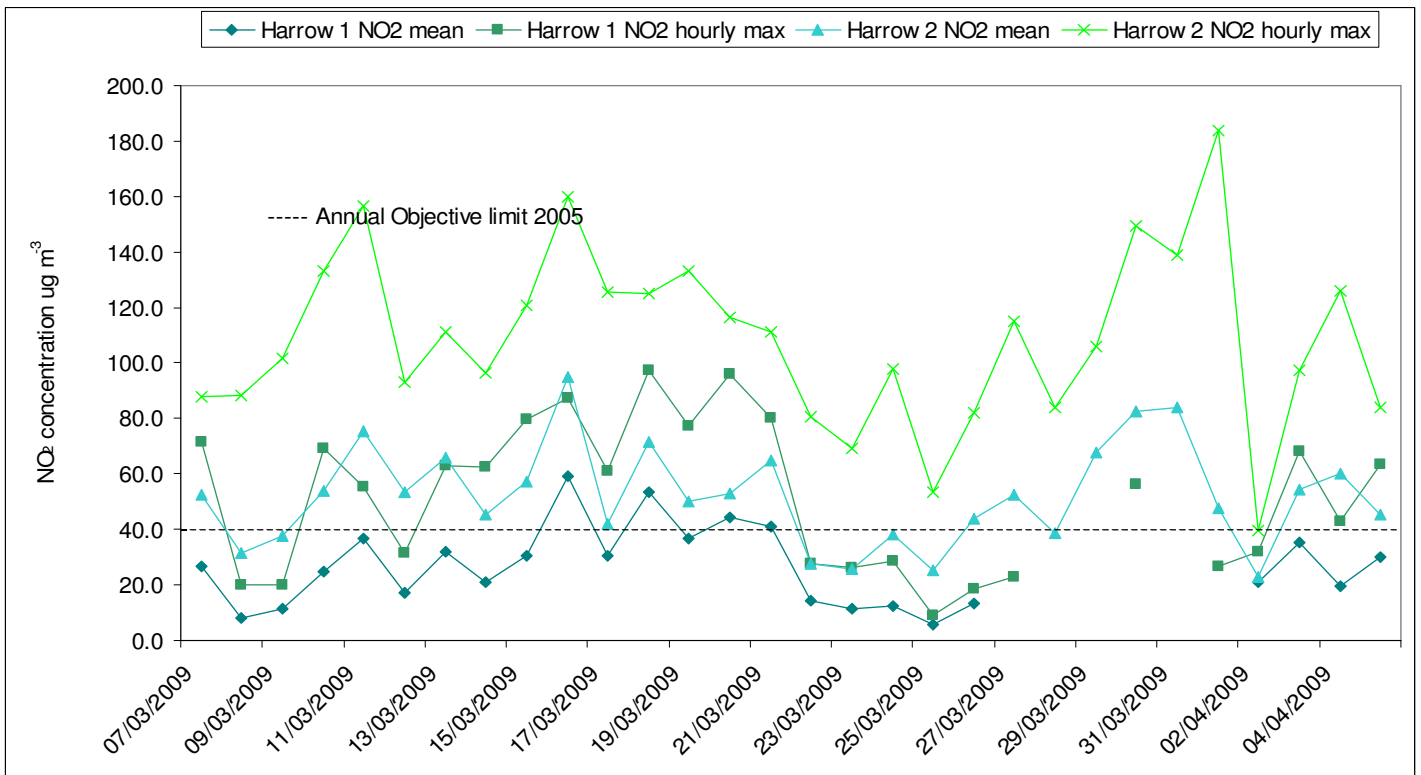
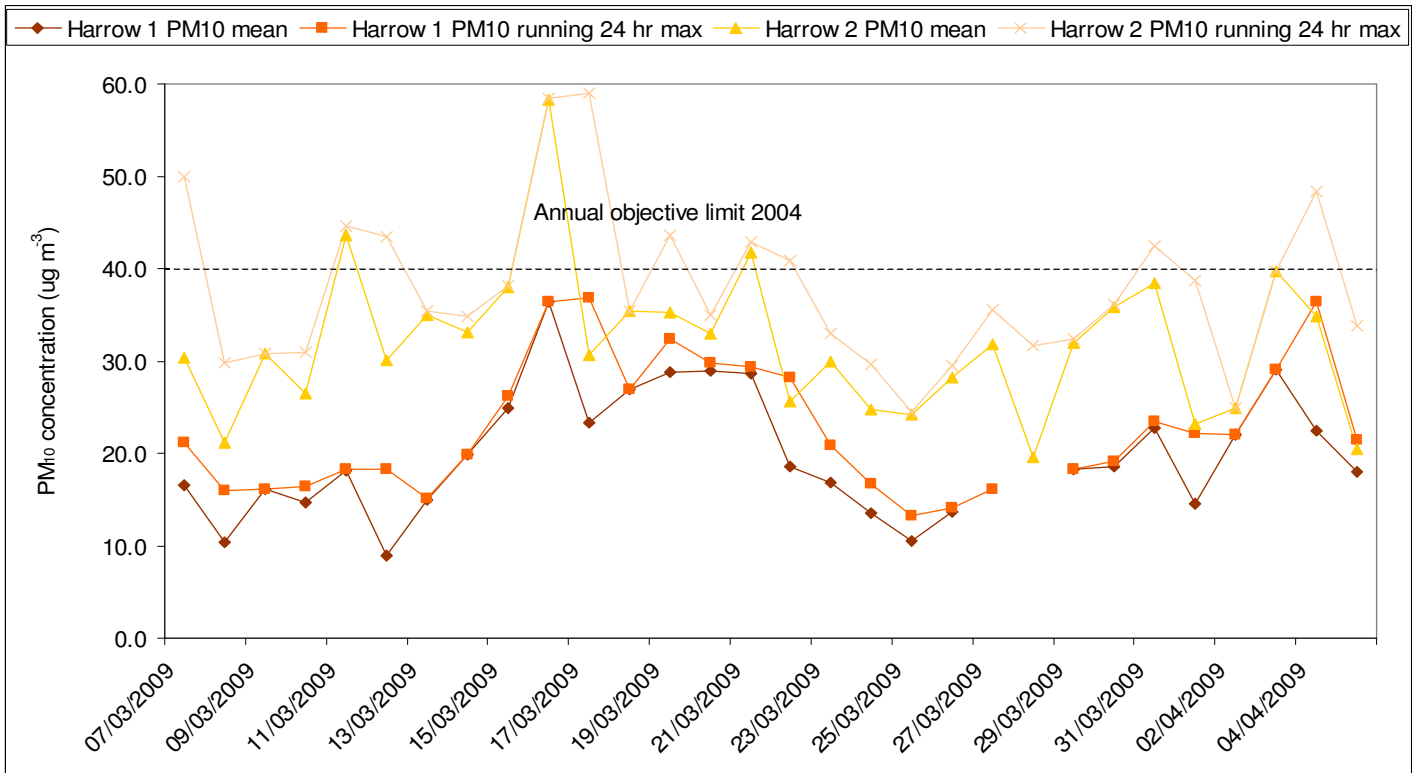


Nitrogen Dioxide (NO₂) concentrations (µg m⁻³) from Harrow 1 (Background) and Harrow 2 (Roadside) continuous monitoring stations from 7-Mar-2009 to 5-Apr-2009.



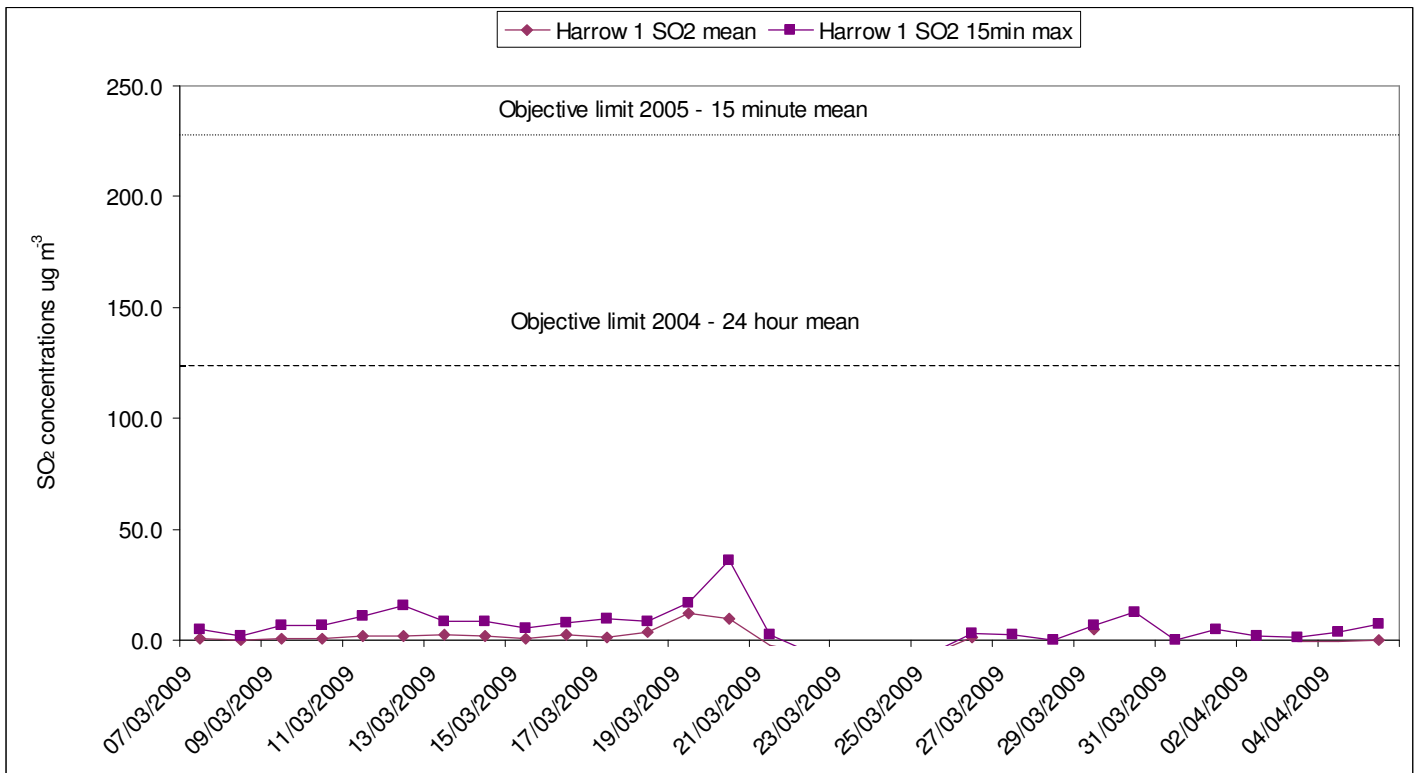
The NO₂ mean concentrations are daily mean figure and the NO₂ hourly max are the maximum figure in an hour for the 24 hour period.

Particulate (PM₁₀) concentrations (µg m⁻³) from Harrow 1 (Background) and Harrow 2 (Roadside) continuous monitoring stations from 7-Mar-2009 to 5-Apr-2009.



The PM₁₀ mean concentrations are daily mean figures and the PM₁₀ hourly max are the maximum running figure for a 24 hour period. All data corrected from TEOM to gravimetric standard.

Sulphur Dioxide (SO₂) concentrations (µg m⁻³) from Harrow 1 (Background) and Harrow 2 (Roadside) continuous monitoring stations from 7-Mar-2009 to 5-Apr-2009.



The SO₂ mean concentrations are daily mean figures and the SO₂ hourly max are the maximum running figure for each 15 minute period during each 24 hour period.